

**Construction
Imaging®**

StarBuilder Integration

MANAGE | AUTOMATE | INTEGRATE

Providing content management technologies to fully manage, automate, and integrate construction business processes with construction business applications, document archiving, and information availability. Automated workflows, integrated applications, and structured information management provide our clients with the necessary tools and professional resources to implement and maintain a successful Enterprise Content Management strategy.

Construction Imaging fully integrates with AMSI's StarBuilder and StarProject Construction Software providing a "best in class" pairing between ECM and ERP. Construction Imaging technologies augment the business process, providing electronic workflows to streamline the data collection into the StarBuilder and StarProject ERP system. Additionally, the ECM integration provides a central storage and management solution for all electronic documentation.

Additionally, centralized storage provides a principal administration portal for security, access, archiving, backup, and retention. Construction Imaging solutions equip StarBuilder and StarProject users and administrators with an array of tools to develop and maintain a comprehensive Enterprise Content Management strategy.

Data Validation

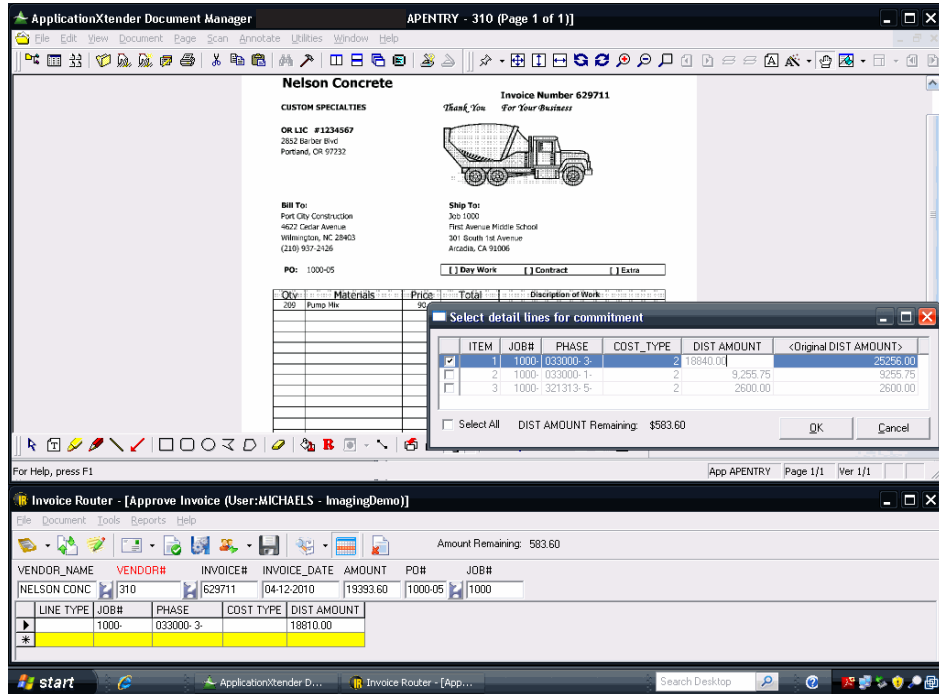
Data validation is a critical component of the StarBuilder and StarProject integration. Data validation ensures that the document management system is operated on correct, clean and up-to-date StarBuilder data. Often this process is carried out for the purpose of making StarBuilder data available to end-users without giving them access to the StarBuilder or StarProject software. It also ensures data consistency between the programs and eliminates manual entry. Popular data validation includes Data Lookup and Commitment Pull.

Data Lookup

Lookups, like in StarBuilder and StarProject, provide an easy way to ensure users input valid information into the appropriate fields. Lookups can be as simple as showing a list of vendors, or as complicated as providing the user with a list of valid cost types for the company, job and phase that they have entered for a particular invoice detail



line. Lookup fields are typically configured to mirror StarBuilder and StarProject, but may be customized to clients requirements if necessary.



Commitment Pull

Invoice Router's standard detail grid provides a great way to code invoices; however, for those invoices that have the coding lines already setup in StarBuilder, implementing the Commitment Pull feature is a great advantage. The Commitment Pull provides real-time access to StarBuilder's PO/SL line item data from Invoice Router. Users are presented with a grid showing all lines in StarBuilder for that particular PO/SL. Users then select lines that apply to that invoice and enter the current amount for the line item being approved.

The Commitment Pull allows users to view the commitment amount remaining in StarBuilder on a purchase order or subcontract prior to routing or approving the invoice in the document management system.

Advanced Validation

StarBuilder and StarProject clients that have advanced validation needs, a solution feature provided allows for customer-created Stored Procedures to be executed when a user attempts to approve a document. The Stored Procedure will have access to any field value from the document and when completed will return a warning or error message stating the reason the document failed validation. If the information validated successfully, the user sees nothing and the document is approved. Stored procedures can include verifying that the subcontract has been signed, insurance is up to date and a lien release is present.

Data Export

Exporting data from Construction Imaging into StarBuilder can be performed in a variety of methods, depending on the document type and/or the client's internal policies and procedures. Data Exports eliminate duplicate keying, which is a goal of any Enterprise Content Management implementation.

Type Once Export

Type Once Technology allows data from Invoice Router to be pushed directly into the Invoice (Add) screen in StarBuilder. Users don't need to learn any new processes; the Type Once Export enters the data exactly as if a user had typed in the invoice manually, but much faster. Validation is performed interactively by StarBuilder as it always has. If an error occurs, the process is paused and the user is prompted to resolve the

problem. If the AP user cannot resolve the problem immediately, the export can be canceled and the document routed to the appropriate user for correction.

Batch Export

This method eliminates the need for AP to see every document, while still ensuring that StarBuilder validates every invoice. An Import Template is provided to import batches of invoices directly into the system. Invoices appear as a new batch in StarBuilder and must still be processed by an AP user. To ensure compliance and data integrity, StarBuilder tables are never directly edited or modified.

Document Linking

Construction Imaging allows linking of documents between the document management repository and StarBuilder and StarProject. Document linking allows those users who access StarBuilder and/

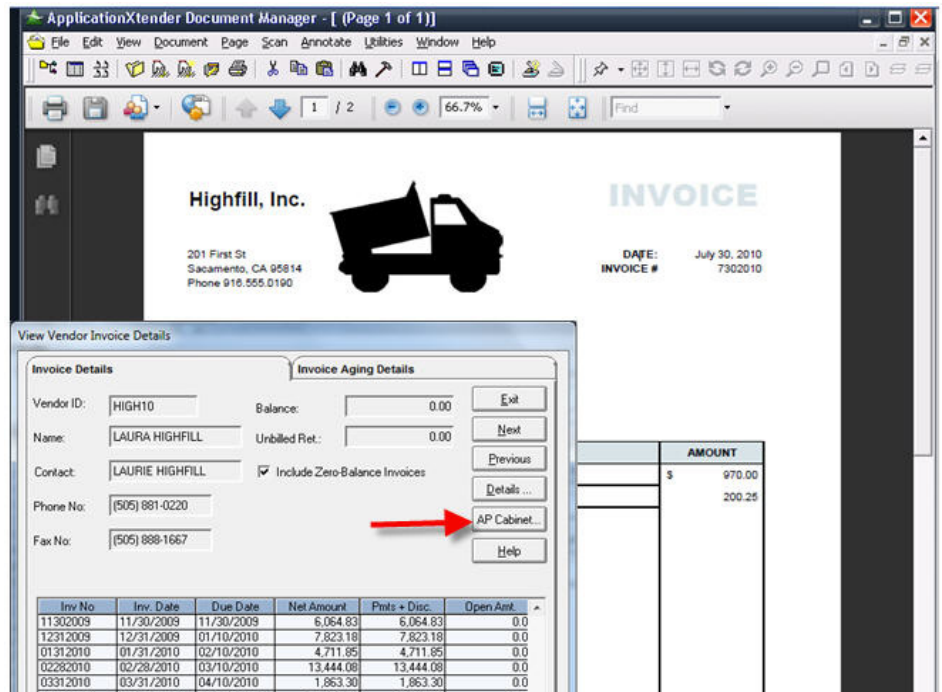
or StarProject an interface to efficiently view documents through Construction Imaging's interface with the additional benefit to add pages and make annotations on the document image from the document repository.

StarBuilder and StarProject Interface

The Document Management System can be configured to link documents from the AP, Jobfiles and HR cabinets. When a user is in either StarBuilder or StarProject, they are able to search and view document images easily by clicking the Cabinet button on the form. When a user retrieves that document, it is opened automatically in Construction Imaging's viewer. Attachments can easily be added to the open document by drag-and-drop. If a user chooses to email a document, such as an RFI, the document is seamlessly exported from Construction Imaging and attached to the email. The same applies for Job Billing CD creation; any associated documents can be exported and put on the CD.

Powerful Viewer

Construction Imaging provides a powerful viewer with support for more than 200 document types. Some popular types include: Word, Excel, PDF, CAD, JPEG, TIFF and many more. Users no longer need expensive third party software to simply view a stored document.



The Document Management System can be configured to link documents from the AP, Jobfiles and HR cabinets. When a user is in either StarBuilder or StarProject, they are able to search and view document images easily by clicking the Cabinet button on the form. Construction Imaging's document management system supports 200+ native document views from within the system, providing complete document control without downloading files to the desktop.